

**PORSCHE**

Price List

## INTRODUCTION

A Porsche is a car for the individual. Whatever the customer desires, Porsche will endeavour to deliver. With flexibility at the production stage, Porsche is ideally positioned to respond to the needs of the individual. This price list introduces the standard features and optional equipment available on the current Porsche range. Further information plus the numerous possibilities offered by the Porsche Exclusive Programme are available from any Official Porsche Centre.

---

### Peace of mind from comprehensive Porsche warranties.

---

All three Porsche Model Series are produced at the Porsche Zuffenhausen plant, where a combination of state-of-the-art technology and hand craftsmanship ensures that every Porsche is finished to the highest possible standard. Only the highest quality materials are utilised and even they are subject to stringent quality control checks throughout the production process. This attention to detail is exemplified by the use of special zinc-dipped fully galvanised sheet steel for

much of the bodywork. If the bodywork is scratched, the zinc covering spreads over the affected area allowing the bodywork, in essence, to heal and protect itself. Such confidence is demonstrated in the extensive warranties. Porsche was the first car manufacturer to offer a 10 year anti-corrosion body warranty. In addition, the paintwork is protected by a 3 year paint defect warranty and mechanical components by a 2 year unlimited mileage warranty.

---

### 24 Hour Service from Porsche Assistance

---

The first two years of Porsche ownership come complete with an extensive motoring support programme. Should the unthinkable happen and a Porsche be rendered immobile through breakdown, accident or just a simple loss of keys, Porsche Assistance is always just a phone call away. Under the Porsche Assistance Programme a car will, if necessary, be recovered to the most appropriate Official Porsche Centre for repair and can be redelivered when such repairs are completed. To minimise the inconvenience to the Porsche owner and

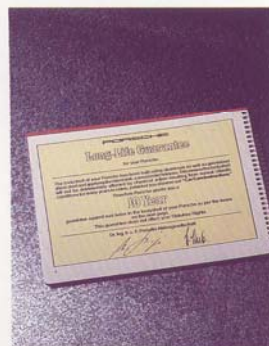
passengers, allowances are also provided for car hire, hotel accommodation or onward travel.

---

### The Official Porsche Centre Network – Maintaining Standards

---

Each Centre in the Official Porsche Centre Network is regularly assessed in order to maintain standards that a Porsche owner deserves. Such a sophisticated piece of engineering as a Porsche requires first class maintenance and, therefore, only a Porsche trained technician is truly qualified to complete service and repair work. Through regular training courses at Porsche Cars Great Britain's Reading Headquarters, technicians are kept informed of all the latest Porsche technical innovations. Moreover, at an Official Porsche Centre you have the satisfaction of knowing that all work carried out will be with Genuine Porsche Parts or recommended materials. This not only provides a guarantee for the service and repair itself but maintains the protection of the Porsche bodywork, paint and mechanical warranties.



*The extensive warranties provided with a Porsche reaffirm the commitment to excellence.*



*An Official Porsche Centre is able to cater for the needs of the discerning Porsche owner.*



*Comprehensive training is combined with genuine affinity for the product.*



*A reassuring thought - Porsche Assistance when needed.*







## 911 Carrera 2

### STANDARD UK EQUIPMENT

- Controlled 3-way catalytic converter
- 5-speed manual transmission
- ABS (anti-lock) braking system
- Servo braking system with 4-piston fixed light alloy callipers (rear), 2-piston fixed light alloy callipers (front) and ventilated discs
- Brake pad wear indicator
- Electronic driver warning system
- Removable folding roof panel (Targa only)
- Knock sensor
- Pressure cast light alloy 'Cup Design' wheels with anti-theft device
  - Front: 6J x 16 wheels with 205/55 ZR 16 ultra-low profile tyres
  - Rear: 8J x 16 wheels with 225/50 ZR 16 ultra-low profile tyres
- Automatically operated aerodynamic rear spoiler
- Front seats (in either partial leather or cloth trim) with electrical height adjustment
- Tinted, heat insulating windows and laminated windscreen
- Leather covered 4-spoke sports steering wheel, handbrake and gear lever
- Heated windscreen washer nozzles
- Long range driving lights and fog lights
- Internally adjustable headlamp beam
- Electrically adjustable heated door mirrors
- Blaupunkt 'Symphony' stereo radio/cassette player with 8-speaker sound system and windscreen aerial
- Integrated central locking and alarm system
- Cassette and coin holder
- Electrically operated windows
- Progressive power assisted steering
- Automatic heating control
- Rear window wiper (Coupé and Targa only)
- Headlamp washers
- Front and rear anti-roll bars
- Hot zinc-dipped fully galvanised bodywork
- Deformable thermoplastic front and rear body panels with integral light metal bumpers
- 3-speed windscreen wipers with variable intermittent wipe facility

## 911 Carrera 2 Cabriolet

### In addition to, or replacing, the above Standard Equipment:

- Full electrically operated hood
- Clear, flexible, non-heated rear window
- Windscreen antenna, 6 loudspeakers, suppression and antenna amplifier

## 911 Carrera 2 Tiptronic

### In addition to, or replacing, the above Standard Equipment:

- Porsche Tiptronic Transmission featuring:
  - 4-speed automatic transmission
  - A combination of both manual and automatic electronic gear selection
  - Electronic Intelligent Shift Programme
- Porsche Computer Driver Information System

## 911 Carrera 4

### In addition to, or replacing, the Carrera 2 Standard Equipment:

- Porsche Dynamic All-Wheel-Drive System featuring:
  - Electronically controlled Longitudinal differential
  - Electronically controlled Transverse differential
  - Driver-controlled Traction Programme (with full ABS compatibility)
- Hydraulically boosted braking system with 4-piston brake callipers front and rear

## 911 Carrera 4 Cabriolet

### In addition to, or replacing, the above Carrera 4 Standard Equipment:

- Full electrically operated hood
- Clear, flexible, non-heated rear window
- Windscreen antenna, 6 loudspeakers, suppression and antenna amplifier

## 911 Series

After twenty eight years, the classic lines of the 911 Series remain unchanged. But, through the introduction of innovative

Porsche developments, proven on the world's race circuits, the 911 Carrera 2 remains at the forefront of technology.



## 911 Carrera 2

|                       | Retail Basic | Car Tax   | VAT       | Retail Total |
|-----------------------|--------------|-----------|-----------|--------------|
| Coupé                 | £39,471.00   | £1,644.63 | £7,195.24 | £48,310.87   |
| Targa                 | £41,324.00   | £1,721.84 | £7,533.02 | £50,578.86   |
| Cabriolet             | £44,428.00   | £1,851.17 | £8,098.85 | £54,378.02   |
| <b>WITH TIPTRONIC</b> |              |           |           |              |
| Coupé                 | £41,598.00   | £1,733.25 | £7,582.97 | £50,914.22   |
| Targa                 | £43,451.00   | £1,810.46 | £7,920.76 | £53,182.22   |
| Cabriolet             | £46,555.00   | £1,939.79 | £8,486.59 | £56,981.38   |

The 911 Carrera 4's 'intelligent' all-wheel drive system, derived from the 959, marks a new peak in the history of the 911 series. A microprocessor controlled system continually

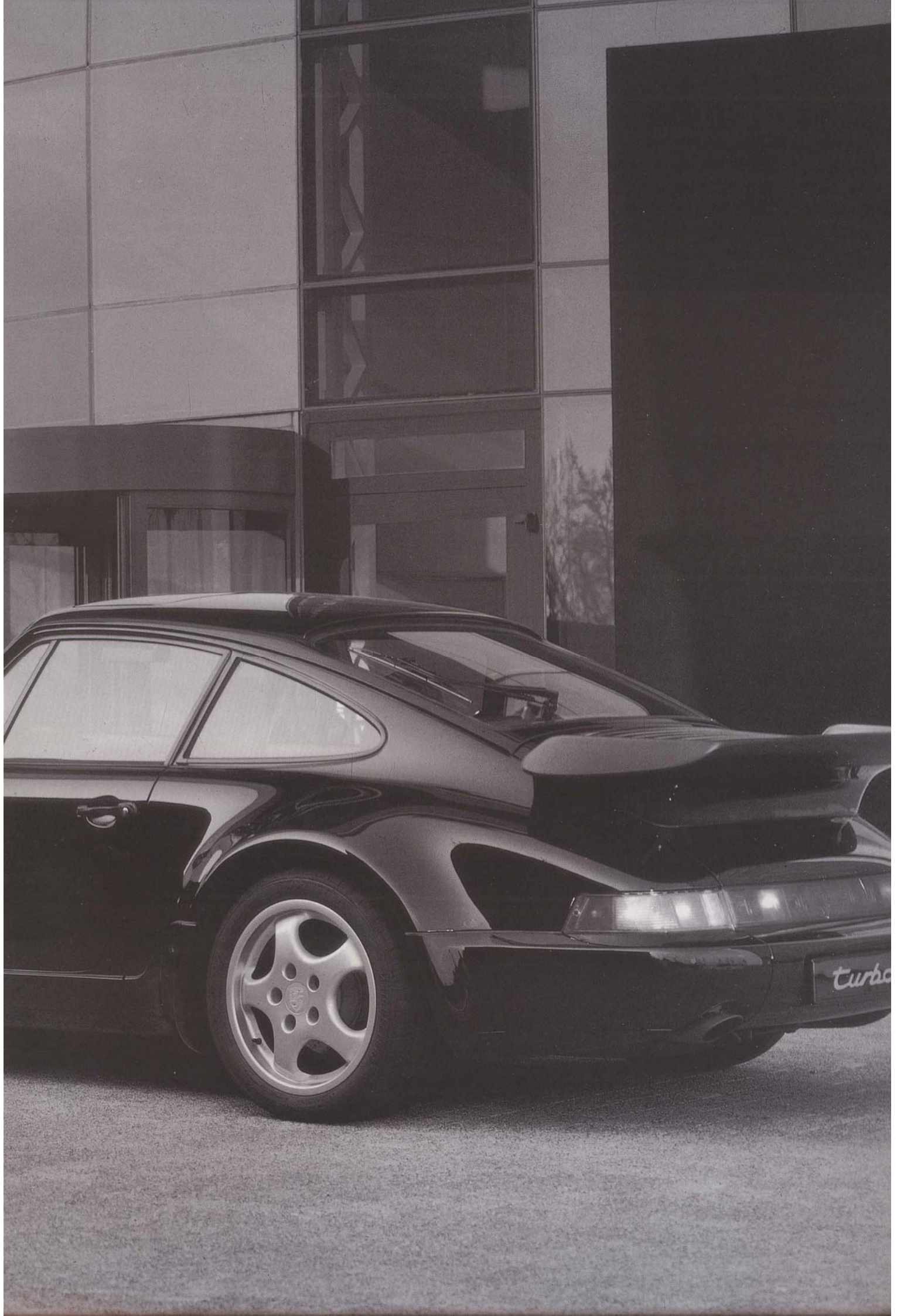
monitors your driving style and the road conditions re-distributing the power to the wheels to provide outstanding directional stability and exceptional traction.



## 911 Carrera 4

|           | Retail Basic | Car Tax   | VAT       | Retail Total |
|-----------|--------------|-----------|-----------|--------------|
| Coupé     | £45,220.00   | £1,884.17 | £8,243.23 | £55,347.40   |
| Targa     | £47,074.00   | £1,961.42 | £8,581.20 | £57,616.62   |
| Cabriolet | £50,179.00   | £2,090.79 | £9,147.21 | £61,417.00   |





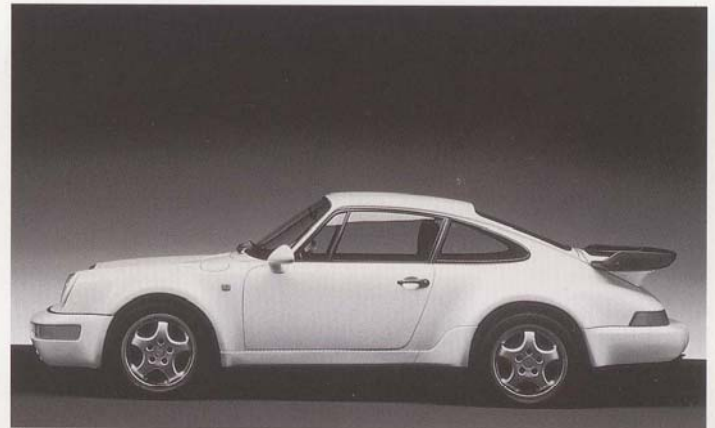


## STANDARD UK EQUIPMENT

- Controlled 3-way catalytic converter
- 5-speed manual transmission
- Large fixed aerodynamic rear spoiler
- ABS (anti-lock) braking system with 4-piston fixed light alloy callipers and ventilated and perforated discs
- Brake pad wear indicator
- Electronic driver warning system
- Knock sensor
- Pressure cast light alloy 'Cup Design' wheels with anti-theft device
  - Front: 7J x 17 wheels with 205/50 ZR 17 ultra-low profile tyres
  - Rear: 9J x 17 wheels with 255/40 ZR 17 ultra-low profile tyres
- Front seats (in either partial leather or cloth trim) with electrical height adjustment
- Tinted, heat insulating windows and laminated windscreen
- Leather covered 4-spoke sports steering wheel, handbrake and gear lever
- Heated windscreen washer nozzles
- Long range driving lights and fog lights
- Internally adjustable headlamp beam
- Driver and passenger, electrically adjustable heated door mirrors
- Blaupunkt 'Symphony' stereo radio/cassette player with 8-speaker sound system and windscreen aerial
- Integrated central locking and alarm system
- Cassette and coin holder
- Electrically operated windows
- Progressive power assisted steering
- Automatic full climate control
- Rear window wiper
- Headlamp washers
- Front and rear anti-roll bars
- Hot zinc-dipped fully galvanised bodywork
- Deformable thermoplastic front and rear body panels with integral light metal bumpers
- 3-speed windscreen wipers with variable intermittent wipe facility

With a combination of classic looks and outstanding performance, the 911 Turbo remains one of the world's most coveted supercars. And to safely experience the exhilarating

drive and performance capability from the 320 bhp engine, the 911 Turbo has one of the most effective braking systems ever fitted to a production sports car.



## 911 Turbo

|       | Retail Basic | Car Tax   | VAT        | Retail Total |
|-------|--------------|-----------|------------|--------------|
| Turbo | £61,527.00   | £2,563.63 | £11,215.86 | £75,306.49   |

With brakes, suspension and running gear derived from the 911 Turbo, the 911 Cabriolet Turbo-Look shares more than exceptional visual appeal with its high performance contemporary.

With a fully electrically operated hood and outstanding performance, the Turbo-Look is quite simply, open-top driving in its purest form.



## 911 Carrera 2 Cabriolet

### Turbo-Look

|                      | Retail Basic | Car Tax   | VAT        | Retail Total |
|----------------------|--------------|-----------|------------|--------------|
| Turbo-Look           | £55,304.00   | £2,304.34 | £10,081.46 | £67,689.80   |
| Turbo-Look Tiptronic | £57,432.00   | £2,393.00 | £10,469.38 | £70,294.38   |

## 911 Carrera 2 Cabriolet

### Turbo-Look

In addition to, or replacing, the above 911 Turbo Standard equipment:

- Full electrically operated hood
- Clear, flexible, non-heated rear window (no wiper)
- Windscreen antenna, 6 loudspeakers, suppression and antenna amplifier
- Automatically operated aerodynamic rear spoiler
- Heated seats with adjustable temperature

## 911 Carrera 2 Cabriolet

### Turbo-Look Tiptronic

In addition to, or replacing, the above Turbo-Look Standard Equipment:

- Porsche Tiptronic Transmission featuring:
  - 4-speed automatic transmission
  - A combination of both manual and automatic electronic gear selection
  - Electronic Intelligent Shift Programme
- Porsche Computer Driver Information System







## STANDARD UK EQUIPMENT

- Controlled 3-way catalytic converter
- 5-speed manual transmission
- Automatically operated aerodynamic rear spoiler
- ABS (anti-lock) braking system with 4-piston fixed light alloy callipers and ventilated and perforated discs
- Progressive power assisted steering
- 'Cup Design' pressure cast light alloy wheels with anti-theft device
  - Front: 7.5J x 17 wheels with 205/50 ZR 17 ultra-low profile tyres
  - Rear: 9J x 17 wheels with 255/40 ZR 17 ultra-low profile tyres
- Electronic driver warning system
- Leather, manually adjustable bucket seats
- Automatic heating control
- Manually operated windows
- Manually adjusted door mirrors
- Deformable thermoplastic front and rear body panels encasing resilient bumpers
- Weight saving tinted windows
- Laminated windscreen
- 3-speed windscreen wipers with variable intermittent wipe facilities
- Heated windscreen washers
- Integral rear fog lamps
- Leather covered steering wheel and horn boss, gear lever and gaiter
- Windscreen antenna

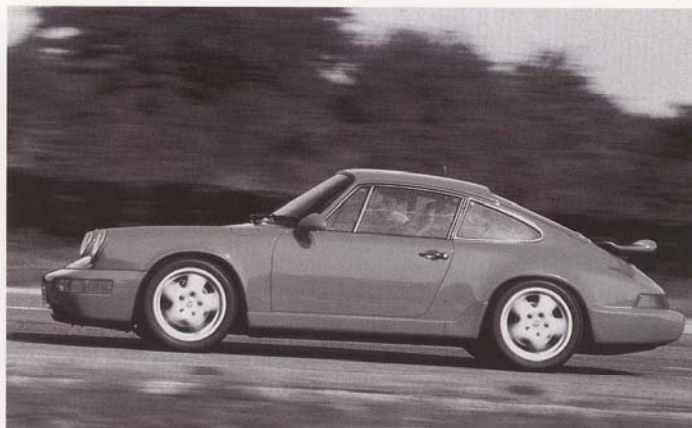
## 911 Carrera RS Touring

In addition to, or replacing, the above Standard Equipment:

- Alarm system - door-key activated
- Central door locking
- Sport seats with electrical height adjustment
- Electrically operated windows
- Storage compartment and coin holder
- 8-speaker sound system

The introduction of the latest 911 Carrera RS is the rebirth of a legend. Available in either a Lightweight or Touring version, the Carrera RS offers breathtaking performance. The

Lightweight is some 10% lighter than the standard Carrera 2 while both benefit from increased engine output, sports suspension, 17 inch wheels and an enhanced ABS braking system.



## 911 Carrera RS

|             | Retail Basic | Car Tax   | VAT       | Retail Total |
|-------------|--------------|-----------|-----------|--------------|
| Lightweight | £49,920.00   | £2,080.00 | £9,100.00 | £61,100.00   |
| Touring     | £49,920.00   | £2,080.00 | £9,100.00 | £61,100.00   |



## OPTIONAL EQUIPMENT

### Grundig 5500 RDS

Designed by F.A. Porsche, the Grundig 5500 RDS is both attractive and easy to use. The Radio Data System (RDS) feature provides alphanumeric programme identification, alternative frequency selection and traffic information (where available). Other features include 36 radio station presets, Dolby and metal tape facilities, anti-theft code protection and an anti-theft removable control panel.

### Sony Disc Jockey

The Sony Disc Jockey is a digital radio/cassette player with a 10 disc, boot-mounted autochanger. Features include CD disc magazine scan, random play for individual disc and magazine, 18 radio station presets, Dolby and metal tape facilities, loudness and mute buttons.

### Alarms

A choice of two Alarm systems are available. The Ultrasonic and Alarm Vent Switch Upgrade provides further features to the standard alarm system. The Vent Switch allows sunroof/windows/cabriolet hood to be left open whilst maintaining alarm protection. The full feature Alarm System-1 provides a remote control facility. This enables the windows

and sunroof (or 911 Cabriolet hood) to be closed, both doors locked and the alarm to be armed with the touch of a button.

### Full Leather Interior

A selection of leathers and colours are available to the Porsche customer. If preferred, only the front seats may be trimmed but full leather interior provides extensive cover including all seats, dashboard, centre console, door panels, handles and armrests. Coverage varies between models and full details are available upon request.

### Sunroof

The pleasure of fine weather driving is enhanced with the fitment of a sunroof. The sunroof for the 911 and 928 Series offers full electric assistance for ease of operation. The 968 Coupé offers a larger, removable sunroof with an electrically operated tilt facility.

### Wheels

The option of 17 inch wheels for the 968 Series and 911 Carrera 2 & 4 offers the more demanding Porsche driver enhanced grip and roadholding ability. In addition, the wider wheels also add to the visual appeal.



Grundig 5500 RDS stereo radio/cassette player



Sony Disc Jockey multi-CD autochanger/cassette player/stereo radio



Ultrasonic alarm system



Full leather interior



Electric sunroof



17" 'Cup Design' wheels



|                     |   | 911<br>Carrera 2<br>and 4  | 911<br>Carrera 2<br>Tiptronic  | 911<br>RS<br>Lightweight  | 911<br>RS<br>Touring  |
|---------------------|---|--|--|---|---|
| Air Conditioning    | Automatic full climate control<br>Increased output for standard air conditioner (928 only)  | 2181.09<br>N/A   | 2181.09<br>N/A   | N/A<br>N/A  | 2181.09<br>N/A  |
| Alarm System        | Remote control full-feature Alarm System-1<br>– Coupé (with Sunroof) or 911 Cabriolet<br>– Targa, Coupé (without Sunroof) or 968 Cabriolet<br>Ultrasonics and alarm Vent switch   | 787.00<br>760.08<br>216.65   | 787.00<br>760.08<br>216.65   | N/A<br>N/A<br>N/A   | 787.00<br>760.08<br>216.65  |
| Audio Equipment     | Porsche CD-10 CD player/stereo radio<br>Multi-speaker sound system<br>Additional amplifier system for Porsche CD-10 and Blaupunkt 'Symphony'<br>Grundig 5500 RDS stereo radio/cassette player<br>Sony Disc Jockey multi-CD autochanger/cassette player/stereo radio<br>Blaupunkt 'Symphony' stereo radio/cassette with RDS and anti-theft coding<br>Porsche CDC-1 CD autochanger (for use with Blaupunkt 'Symphony')  | 501.82<br>*<br>257.03<br>285.18<br>1446.72<br>*<br>951.02  | 501.82<br>*<br>257.03<br>285.18<br>1446.72<br>*<br>951.02  | N/A<br>N/A<br>N/A<br>N/A<br>N/A<br>N/A<br>N/A   | N/A<br>N/A<br>N/A<br>285.18<br>1446.72<br>NCO<br>N/A  |
| Computer            | Porsche Driver Information System   | 336.59   | *  | N/A   | N/A   |
| Cruise Control      | Tempostat Automatic Speed Control   | 488.37   | 488.37   | N/A   | N/A   |
| Model Designation   | Deletion of standard designation  | NCO  | NCO  | NCO   | NCO   |
| Paintwork and Trim  | Metallic paint<br>Special metallic paint<br>Paint colour to customer's sample – prices from:<br>Colour co-ordinated rear spoiler<br>Cloth extended to door and side panels (Door panels only - 968 Series and Cabriolet models)<br>Soft ruffled look to leather (not with 'Sport' seats) – only with full leather seats<br>Cloth front and rear seat facings<br>Partial leather seats<br>Leather front and rear seats<br>Leather interior including all seats – prices from:<br>– Coupé or 911 Targa<br>– Cabriolet<br>Special leather interior including all seats – prices from:<br>– Coupé or 911 Targa<br>– Cabriolet<br>Special leather combination including all seats – prices from:<br>– Coupé or 911 Targa<br>– Cabriolet<br>Leather interior to customer's sample – prices from:<br>– Coupé or 911 Targa<br>– Cabriolet | 995.08<br>1305.97<br>1946.09<br>*<br>184.82<br>343.93<br>N/A<br>N/A<br>1430.81<br>3084.38<br>2374.48<br>3430.75<br>2719.63<br>3271.65<br>2560.52<br>4473.57<br>3763.68 | 995.08<br>1305.97<br>1946.09<br>*<br>184.82<br>343.93<br>N/A<br>N/A<br>1430.81<br>3084.38<br>2374.48<br>3430.75<br>2719.63<br>3271.65<br>2560.52<br>4473.57<br>3763.68 | 995.08<br>N/A<br>1946.09<br>*<br>N/A<br>N/A<br>N/A<br>N/A<br>*<br>N/A<br>N/A<br>N/A<br>N/A<br>N/A<br>N/A<br>N/A<br>N/A<br>N/A | 995.08<br>N/A<br>1946.09<br>*<br>N/A<br>N/A<br>N/A<br>N/A<br>*<br>N/A<br>N/A<br>N/A<br>N/A<br>N/A<br>N/A<br>N/A<br>N/A<br>N/A |
| Safety              | Shock absorbing recoil bumpers<br>Headlamp washers<br>Protective side mouldings   | 350.06<br>*<br>N/A   | 350.06<br>*<br>N/A   | N/A<br>N/A<br>N/A   | 350.06<br>259.48<br>N/A   |
| Seats               | Heated seat with adjustable temperature°<br>Full electrical adjustment (not with 'Sport' seats)°<br>Lumbar support (not with 'Sport' seats)°<br>'Sport' seats with electrical height adjustment only°<br>Passenger side seat position memory (928 only)°  | 248.47<br>526.31<br>550.78<br>308.44<br>N/A  | 248.47<br>526.31<br>550.78<br>308.44<br>N/A  | N/A<br>N/A<br>N/A<br>N/A<br>N/A   | 248.47<br>N/A<br>N/A<br>N/A<br>N/A  |
| Shock Absorbers     | 'Sport' specification (928 only)  | N/A  | N/A  | N/A   | N/A   |
| Steering Wheel      | 30mm steering wheel hub extension   | 69.77  | 69.77  | 69.77   | 69.77   |
| Storage compartment | Carpet covered storage unit to replace rear seats (911 only)  | 537.32   | 537.32   | N/A   | N/A   |
| Sunroof             | Electrically operated sliding steel sunroof (Coupé only)<br>Removable sunroof with electrically operated tilt facility (968 only)   | 1554.43<br>N/A   | 1554.43<br>N/A   | N/A<br>N/A  | 1554.43<br>N/A  |
| Suspension          | Full 'Sport' specification (911 only)   | 504.27   | 504.27   | N/A   | N/A   |
| Tonneau cover       | 911 Cabriolet only  | 1048.93  | 1048.93  | N/A   | N/A   |
| Transmission        | Limited slip differential (not 911 Carrera 4)   | 886.15   | N/A  | N/A   | N/A   |
| Wheels              | 17" 'Cup Design' pressure cast light alloy wheels with ultra-low profile tyres and anti-theft device  | 1034.25  | 1034.25  | *   | *   |
| Windscreen          | Non-tinted<br>Tinted with dark green upper edge (not 968 Cabriolet)   | NCO<br>67.32   | NCO<br>67.32   | N/A<br>N/A  | NCO<br>67.32  |

The extensive selection of standard exterior and interior colour combinations is a Porsche hallmark. In addition, Porsche specialises in the preparation of exterior paintwork and leather interiors in colours and combinations to your personal specification. However, please note that such requests could increase the build-time and cost of your Porsche. Further information and specialist advice are available from your Official Porsche Centre.

°Option prices are per seat







Diplomatic and Tax  
Free Sales

For Diplomatic Sales  
and tax free personal  
export enquiries,  
please contact the  
Customer Relations  
Department of Porsche  
Cars Great Britain  
Limited.

Porsche Cars Great  
Britain Limited,  
Bath Road, Calcot,  
Reading, Berkshire.  
RG3 7SE  
Telephone: (0734)  
303666  
Telefax: (0734) 303713